

HERBST

KNIFE-MAKING ACADEMY



Knives | Training | Machines | Supplies

HERBST KNIFE-MAKING ACADEMY

HERBST KNIFE-MAKING ACADEMY is a father and son team who promote the art of handmade knives as a hobby or business. HERBST KNIFE-MAKING ACADEMY is located in the north of Pretoria, South Africa. Where knives are handcrafted by Gawie and Thinus Herbst, both are award winning members of the knife makers guild of Southern Africa. They have received several awards for their outstanding designs and craftsmanship. Gawie was the first knife-maker to master and employ decorative lazer-cutting through blades. His spectacular African designs are well known especially the designs of the Big Five and are copied by numerous knife-makers around the world.

The quality and craftsmanship of these knives are outstanding . All the designs and materials used in the production of HERBST knives are reflective of the uniquely rich South African environment.

Not only do we make exceptional knives but we also have knife-making courses available that is completely hands-on. One can choose between three different courses during which you will have the opportunity to learn how to design and make your own knife. These courses include a fixed blade knife-making course, a basic folder knife-making course (slip back) and a liner-lock folders knife-making course.

HERBST KNIFE-MAKING ACADEMY is also one of the leading manufacturers of knife-making machines, tools and contact wheels for the hobbyist and professional knife maker.

Further more, when purchasing any product from the HERBST KNIFE-MAKING ACADEMY you will receive a comprehensive support service that includes supplies to start you off in the knife-making world.







Ultimate grinder

The Ultimate grinder is a heavy duty grinder with a robust design. It is especially useful for grinding, bevelling, de-burring, de-scaling, polishing, finishing and knife sharpening. The Ultimate is any knife-maker's dream machine, with so many options from hollow grinding to flat grinding or radius grinding with the small wheel attachment to buffing with the buff attachment this machine can do it all. The unique design of the Ultimate makes it possible for horizontal and vertical operation. Quick easy belt change with positive dynamic belt tracking which has been proven and perfected on the Ultimate since 1988. The Ultimate features a 300 mm x 25 mm contact disc wheel and a 150 mm x 50 mm or 200 mm x 50 mm drive wheel.

Specifications

- * Powered by a .75 kW single phase or three-phase motor.
- * Foot operated, quick release belt and wheel change mechanisms.
- * Includes a forward and reverse switch.
- * A large fully adjustable rest.
- * Accommodates contact wheels from 50 mm to 550 mm in diameter.
- * Uses industry standard 2000 mm x 25 mm or 50 mm belts.
- * Overall dimensions : D =1000 mm, W = 750 mm, H =1230 mm.
- * Weight = 60 kg.

Attachments for the Ultimate Grinder



Variable speed Inverter

Variable speed for precision grinding and polishing.

Specifications:

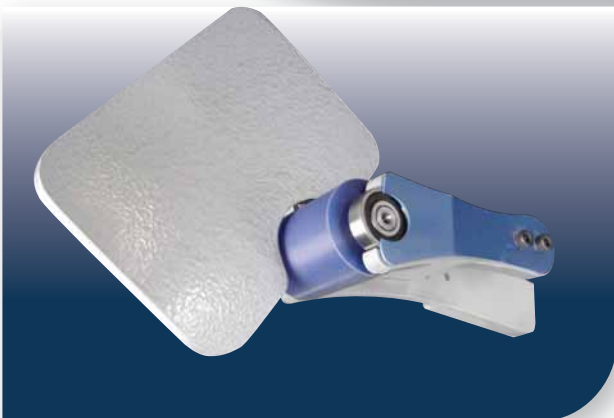
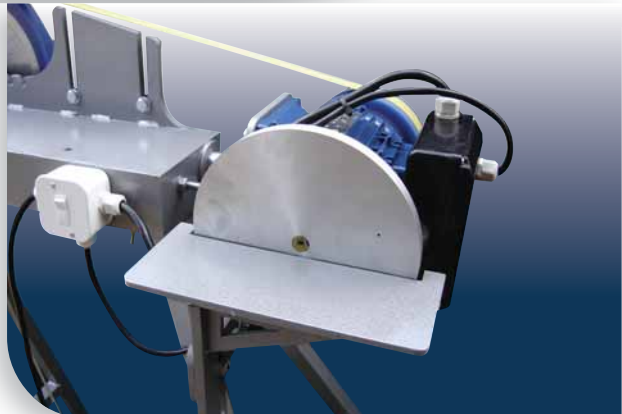
- * D = 150 mm, W = 95 mm, H = 205 mm.
- * weight = 2.75 kg.
- * .75 kW inverter.

Disc attachment

Disc grinder with a sturdy rest and a forward-reverse switch. Ideal for knife makers.

Specifications:

- * Diameter of disc is 230 mm
- * Use standard sheets of sanding paper.
- * D = 150 mm, W = 275 mm, H = 230 mm.
- * Weight = 5.5 kg.



Small wheel attachment

For grinding small contours.

Specifications:

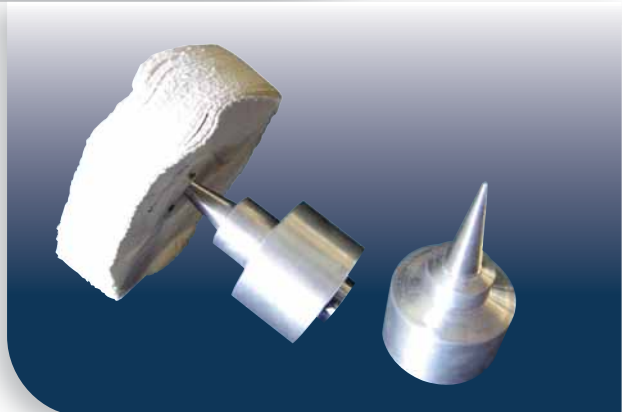
- * 19 mm, 38 mm and 50 mm wheels included.
- * D = 380 mm, W = 180 mm, H = 130 mm.
- * weight = 4.3 kg.

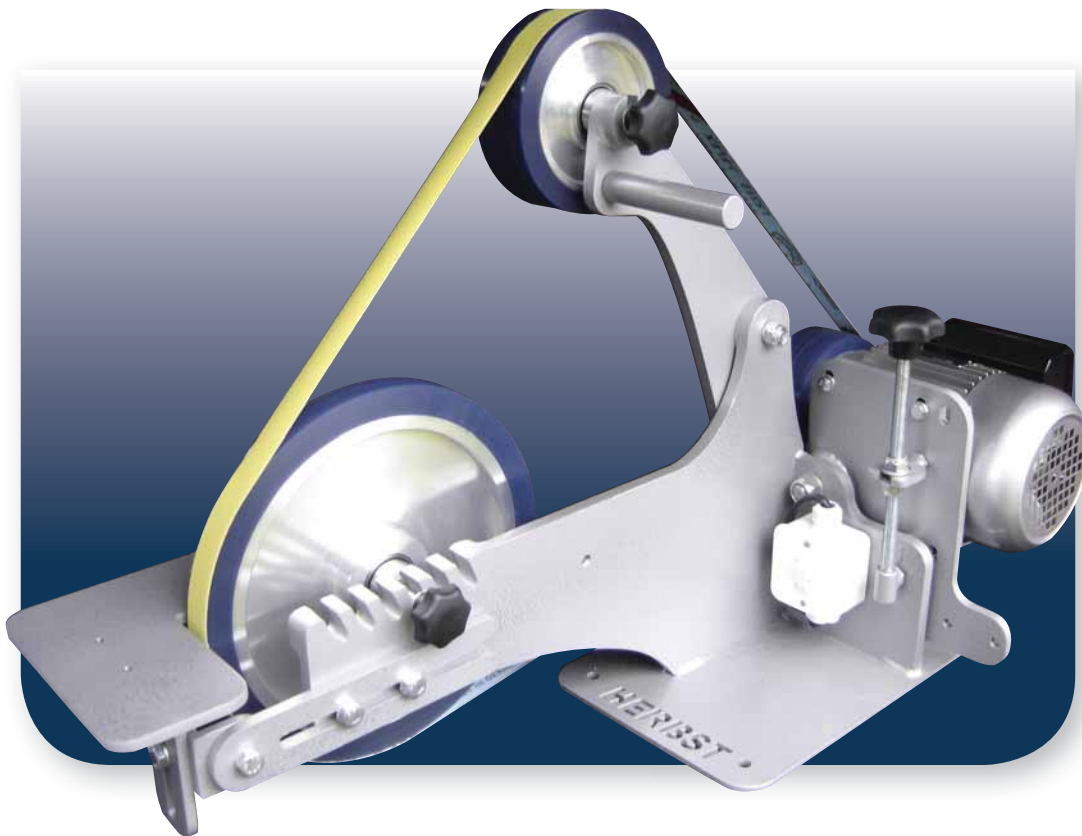
Buff attachment

Convert almost every available belt grinder into a proper polishing machine.

Specifications:

- * Includes bearing and axle.
- * W = 160 mm, D = 90 mm, H = 90 mm.
- * weight = 2 kg.





Three wheel grinder

The Three wheel grinder is to date one of the most reasonable priced professional grade grinders available. Quick easy belt change with positive belt tracking control and quiet smooth running minimizes operator fatigue.

Our Three wheel grinders are perfect due to its simplicity, compactness, solidity and convenience. The small footprint of the Three wheel grinder is what makes it a popular choice for the hobbyist and professional knife-maker.

The Three wheel grinder features a 300 mm x 25 mm contact disc wheel and a 150 mm x 50 mm or 200 mm x 50 mm drive wheel. For the jockey wheel we use a 150mm x 50mm grind wheel that is also interchangeable with the main wheel.

Specifications

- * Powered by a .75 kW single phase or three-phase motor.
- * Jockey wheel and main wheel are interchangeable.
- * Main wheel can be used as a disc sander.
- * A large fully adjustable rest.
- * Accommodates contact wheels from 50 mm to 350 mm in diameter.
- * Uses industry standard 2000 mm x 25 mm or 50 mm belts.
- * Overall dimensions : D: 850 mm, W: 310 mm H: 600 mm
- * Weight = 35 kg.

Optional machine stand



D: 570/300 mm
 W: 460/235 mm
 H: 870 mm
 W: 35 kg

Attachments for the Three wheel grinder



Variable speed Inverter

Variable speed for precision grinding and polishing.

Specifications:

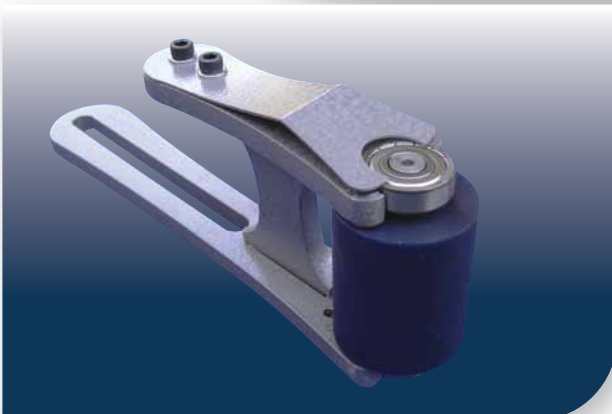
- * D = 150 mm, W = 95 mm, H = 205 mm.
- * weight = 2.7 kg
- * .75 kW inverter.

Disc attachment

Disc grinder with a sturdy rest and a forward-reverse switch. Ideal for knife makers.

Specifications:

- * Diameter of disc is 230 mm
- * Use standard sheets of sanding paper.
- * D = 150 mm, W = 275 mm, H = 230 mm.
- * Weight = 5.5 kg.



Horizontal mini wheel attachment

For grinding small contours.
Can also be fitted to most belt grinders.

Specifications:

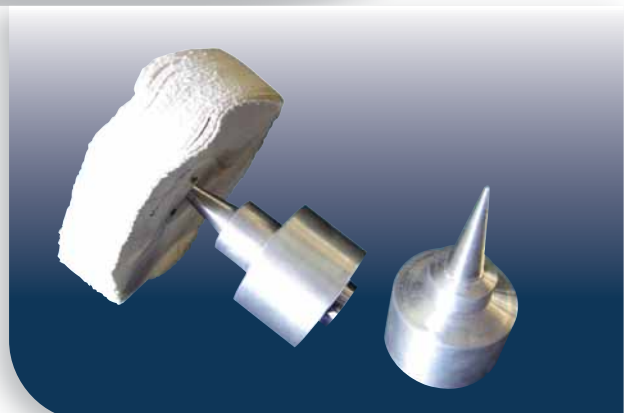
- * 19 mm, 38 mm, and 50 mm wheels included.
- * W = 380 mm, D = 180 mm, H = 130 mm.
- * Weight = 3.5 kg.

Buff attachment

Convert almost every available belt grinder into a proper polishing machine.

Specifications:

- * Includes bearing and axle.
- * W = 160 mm, D = 90 mm, H = 90 mm.
- * weight = 2 kg.





Stick grinder

The Stick grinder is an excellent choice for the knife-maker. One of its most attractive features is that it is very compact a real space saver. The grinder is a front wheel drive machine powered by a .75 kW single or three phase motor.

Specifications:

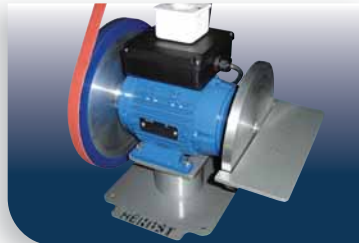
- * D = 400 mm, W = 300 mm, H = 860 mm.
- * weight = 27 kg.
- * .75 kW motor.



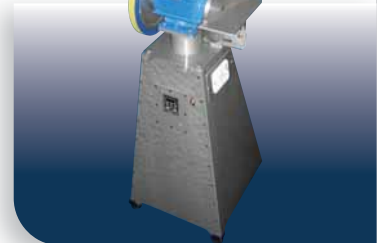
Optional extras



Variable speed Inverter



Disc attachment



Machine stand



Vertical position



Horizontal position

Polishing and disc sander

This machine is fitted with a 300 mm x 25 mm contact wheel and a 230mm disc for flat grinding. The machine is design to work in the horizontal or vertical position making it the ultimate machine for knife polishing. The Polishing and disc sander is a table top mounted machine but we can also supply a stand as an optional extra.

Specifications:

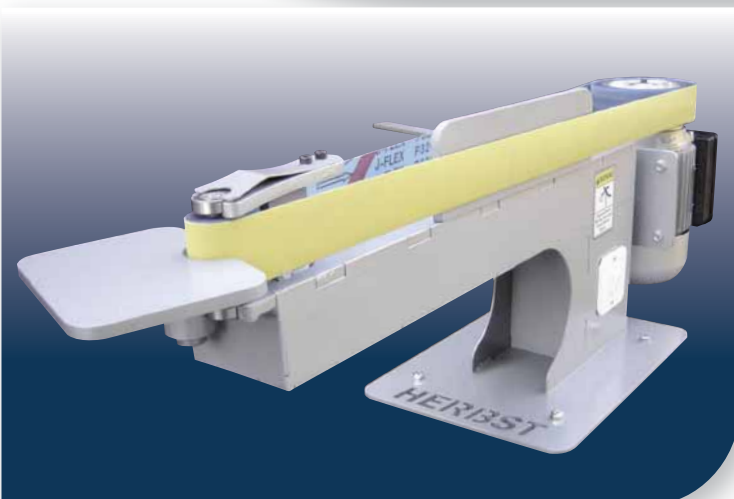
- * Powered by a .75 kW, 1400 rpm three phase motor.
- * Fitted with a .75 kW inverter.
- * Foot switch is standard.
- * D = 500 mm, W = 300 mm, H = 550 mm.
- * weight = 27 kg.
- * .75 kW motor.

Mini wheel grinder

This is the perfect machine for grinding small contours. Equipped with a full adjustable rest for easy grinding. Different size contours are achieved by switching to another wheel, diameter. 3 wheels are supplied with this machine, ranging from 20 mm to 50 mm.

Specifications:

- * D = 700 mm, W = 280 mm, H = 330 mm.
- * weight = 32 kg.
- * .75 kW motor.



Mini wheel grinder XL

This machine is exactly the same as the Mini wheel grinder the only difference is the belt length. The XL use the same industry standard 2000 mm x 50 mm as the Ultimate grinder.

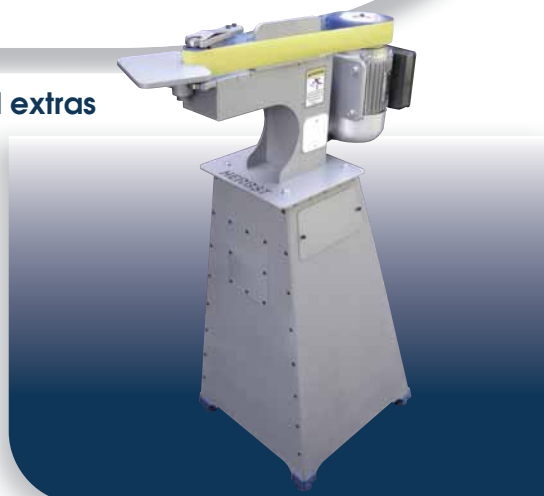
Specifications:

- * Powered by .75 kW single or three phase motor, 1400 rpm.
- * 2000 mm x 50 mm belts.
- * D = 1030 mm, W = 280 mm, H = 350 mm.
- * Weight = 45 kg

Optional extras



Variable speed Inverter



Machine stand



Disc grinder

This machine is fitted with two 230 mm Aluminium disc's for comfortable, accurate, and specialized flat grinding

Specifications:

- * Powered by .75 kW single or three phase motor, 1400 rpm.
- * Quick and easy removal and refitting of both rests are possible.
- * D = 280 mm, W = 450 mm, H = 380 mm.
- * Weight = 25 kg

Disc deluxe

This machine is exactly the same as the standard Disc grinder the only difference is the Disc Deluxe is designed with a rotating base resulting in a bench mounted, double disc grinder with easy access to both disc's.

Specifications:

- * Powered by .75 kW single or three phase motor, 1400 rpm.
- * D = 280 mm, W = 450 mm, H = 380 mm.
- * Weight = 27 kg



Optional extras



Variable speed Inverter



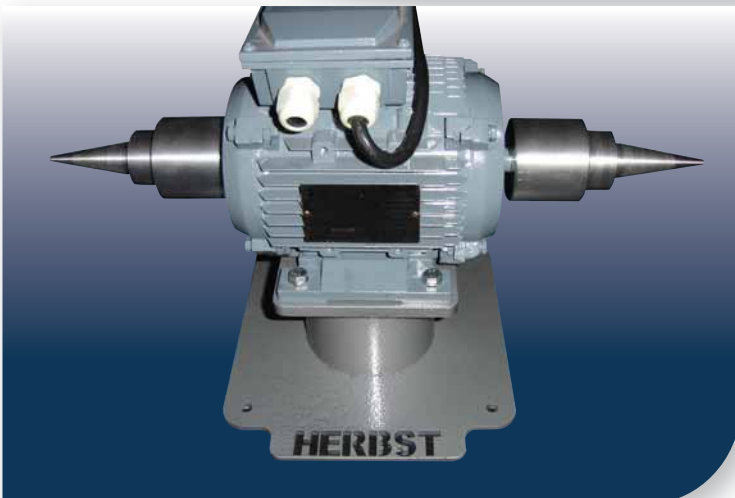
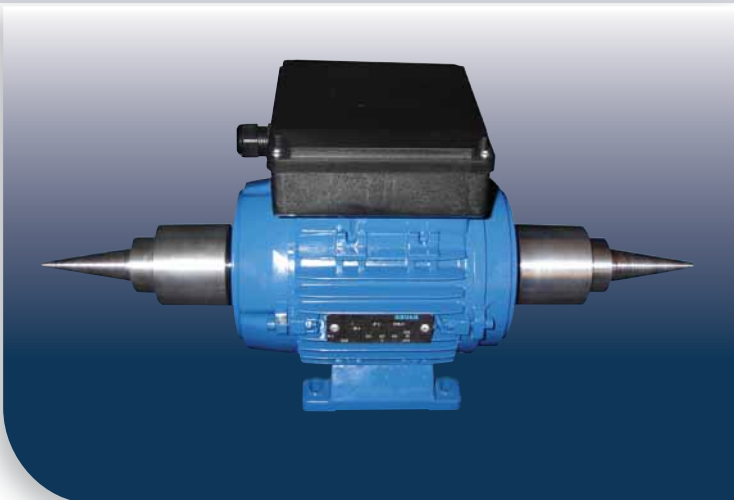
Machine stand

Buff motor

This Buff motor consists of an electric motor fitted with threaded tapered spindles (left and right hand thread) to which buffing mops are attached.

Specifications:

- * Powered by .75 kW single or three phase motor, 2800 rpm.
- * Mop size: 2 x 150 mm-200 mm diameter.
- * D = 250 mm, W = 550 mm, H = 270 mm.
- * Weight = 11 kg



Buff machine

This machine is exactly the same as the Buff Motor the only difference is the Buff machine is mounted on a robust pedestal to be vibration free and stable in use.

Specifications:

- * Powered by .75 kW single or three phase motor, 2800 rpm.
- * Mop size: 2 x 150 mm-200 mm diameter.
- * D = 270 mm, W = 550 mm, H = 380 mm.
- * Weight = 16 kg

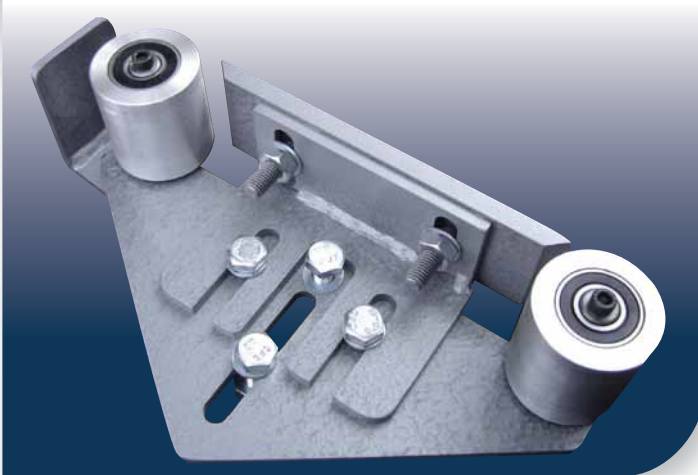
Optional extras



Variable speed Inverter



Machine stand



Vertical Platten

This is a static platten used for flat grinding such as tang tapering. Fitted with two aluminium wheels (50 mm x 50 mm) and a removable backplate between the two wheels.

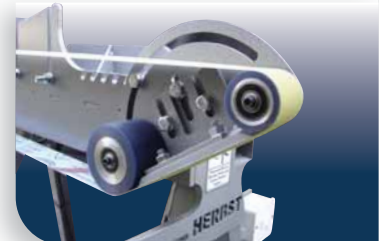
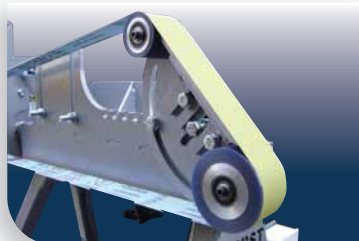
Specifications:

- * D = 150 mm, W = 60 mm, H = 280 mm.
- * Weight = 3.5 kg

Deluxe Platten

The mounting arrangement on the deluxe platten allows the platten to be turned to any of the working surfaces: Flat platten, 50 mm x 50 mm wheel, 80 mm x 50 mm wheel by loosening one bolt.

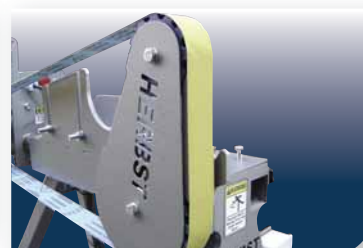
Specifications: * D = 175 mm, W = 60 mm, H = 275 mm. * Weight = 3.6 kg



Ultimate Platten

The Ultimate platten attachment is universally designed to fit a variety of belt grinder machines. The Platten can be rotated (360 degrees) into different grinding positions which offers ease of changeover and the Ultimate in versatility. Hollow grinding, flat stock removal and slack belt grinding can be done with this attachment.

Specifications: * D = 200 mm, W = 60 mm, H = 370 mm. * Weight = 6.5 kg



Herbst Vibrating Tumbler

The HERBST vibratory tumblers are ideal for bench top polishing, de-scaling, de-burring and surface conditioning. Vibratory finishing is an economical mass finishing technique which gives you a more uniform finish on large quantities of parts in much less time than standard hand finishing, without the mess. In the work bowl of a vibratory finishing machine, work pieces, media, water and compound are put into motion by a vibratory drive system. This causes a constant relative movement of the media and the work pieces. The heavy polyurethane bowls remove easily and quickly for emptying.

Specifications:

- * Powered by a .75 kW single phase or three phase motor.
- * Overall dimensions : W = 480 mm, D = 480 mm, H = 680 mm.
- * Weight = 32 kg.



Stonewash blade



Media & Compound



There are various types of media available at HERBST, depending on the job required.

Optional extras



Machine stand

KNIFE-MAKING COURSE



The Art of Knife-making

We are very proud of our hands-on knife-making workshops. During these workshops we will guide you to enable you to make the knife of your dreams. We will supply you with the materials that you will need to make your own knife as well as a step-by-step manual. The workshop teaches you the basic techniques of knife-making. Once you have mastered these techniques you can progress on to the more complicated knife-making skills. When you have completed the workshop you will be the proud owner of a handmade knife, with your name etched on the blade.

Basic Folder course (Slip-back)

- You don't need any experience in knife-making.
- Covers the basic design, materials needed suppliers list, mark-out and cutting, hollow grinding, the fitting of bolsters, the final fitting and riveting, the fitting of the handle, mirror finishing, etching of your name and lubricating and caring.
- Includes a comprehensive training manual.
- Includes the folding knife you made.
- Includes extensive hollow grinding exercises.

Basic fixed blade course

- You don't need any experience in knife-making.
- Covers the basic design, materials needed, suppliers list, mark-out and cutting, tang tapering, hollow grinding, the fitting of bolsters, the fitting of the handle, mirror finishing, etching of your name and an overview of basic leather sheath making.
- Includes a comprehensive training manual.
- Includes the fixed blade knife you made.
- Includes extensive hollow grinding exercises.

Liner-lock folder course

- For this course you will need, to have completed one of the above mentioned courses.
- You also have to be competent in hollow grinding.
- Covers the basic design, formulas, materials needed, suppliers list, mark out and cutting, mirror finishing, bolsters, handles, etching, lubricating and caring.
- Includes a comprehensive training manual.
- Includes the folding knife you made.

KNIFE SUPPLIES

Our ever expanding range of SUPPLIES includes everything you will need to make the knife of your dreams.





Gawie and Thinus Herbst

Cell: 082 254 8016

E-mail: info@herbst.co.za

www.herbst.co.za